

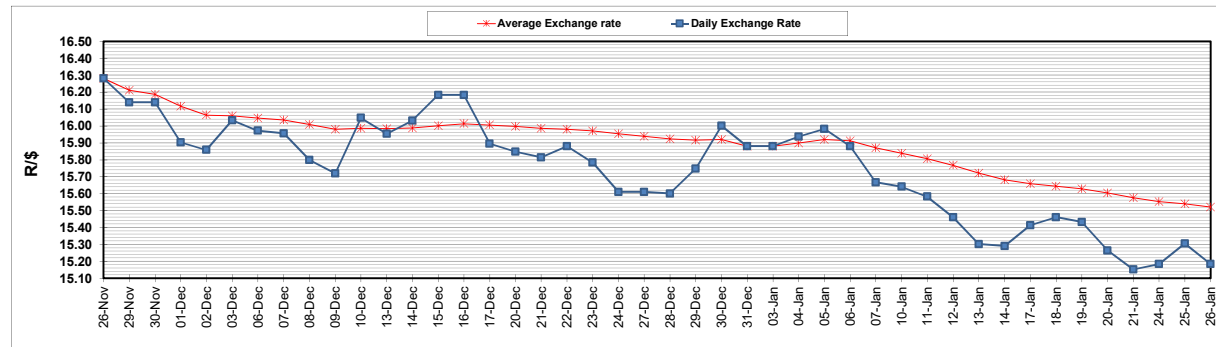
	PETROL 95 ULP	PETROL 93 ULP & LRP	DIESEL 0.05%	DIESEL 0.005%	ILL. PAR.
GAUTENG PUMP PRICE (SA c/l) AS FROM 05/01/2022	1,961.000	1,936.000	-	-	-
WHOLESALE PRICE (SA c/l) AS FROM 05/01/2022	-	-	1,724.680	1,728.080	1,096.688
SINGLE NATIONAL MAXIMUM RETAIL PRICE	-	-	-	-	1,394.000
BASIC FUEL PRICE - 26/01/2022 (SA c/l)	1,012.170	1,000.551	1,023.169	1,027.073	1,018.061
PRESS RELEASE CONTRIBUTION TO BFP 05/01/2022 - 26/01/2022 (SA c/l)	903.470	888.470	885.630	889.030	875.128
UNIT OVER/(UNDER) RECOVERY - 26/01/2022 (SA c/l)	(108.700)	(112.081)	(137.539)	(138.043)	(142.933)
AVERAGE BASIC FUEL PRICE 31/12/2021 - 26/01/2022	976.853	964.933	986.493	988.804	984.445
AVERAGE UNIT OVER/(UNDER) RECOVERY 31/12/2021 - 26/01/2022	(62.299)	(64.905)	(89.810)	(88.406)	(98.106)

ANALYSIS MOVEMENT OF AVERAGE OVER/(UNDER) RECOVERY

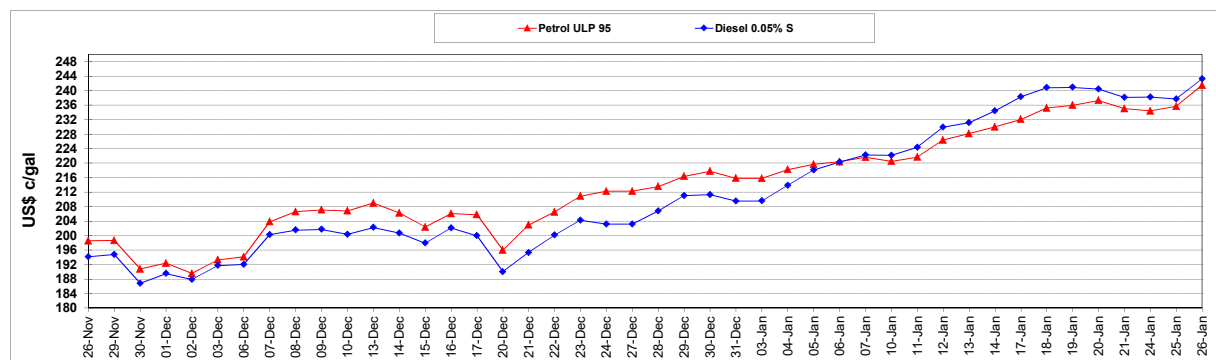
	PETROL 95	PETROL 93	DIESEL 0.05%	DIESEL 0.005%	ILL. PAR.
- MOVEMENT IN INTERNATIONAL PRODUCT PRICES	(87.392)	(89.692)	(115.151)	(113.806)	(123.394)
- MOVEMENT IN EXCHANGE RATE	25.093	24.787	25.341	25.400	25.288
AVERAGE UNIT OVER/(UNDER) RECOVERY 31/12/2021 - 26/01/2022	(62.299)	(64.905)	(89.810)	(88.406)	(98.106)

R/\$ EXCHANGE RATE - (R/\$15.1843 - 26/01/2022)

EXCHANGE RATE USED IN BASIC FUEL PRICE



INTERNATIONAL PRODUCT PRICES OF BASKET USED IN BASIC FUEL PRICE



BASIC FUEL PRICE IN SA CENTS PER LITRE

